

Inspected for: Property Owner



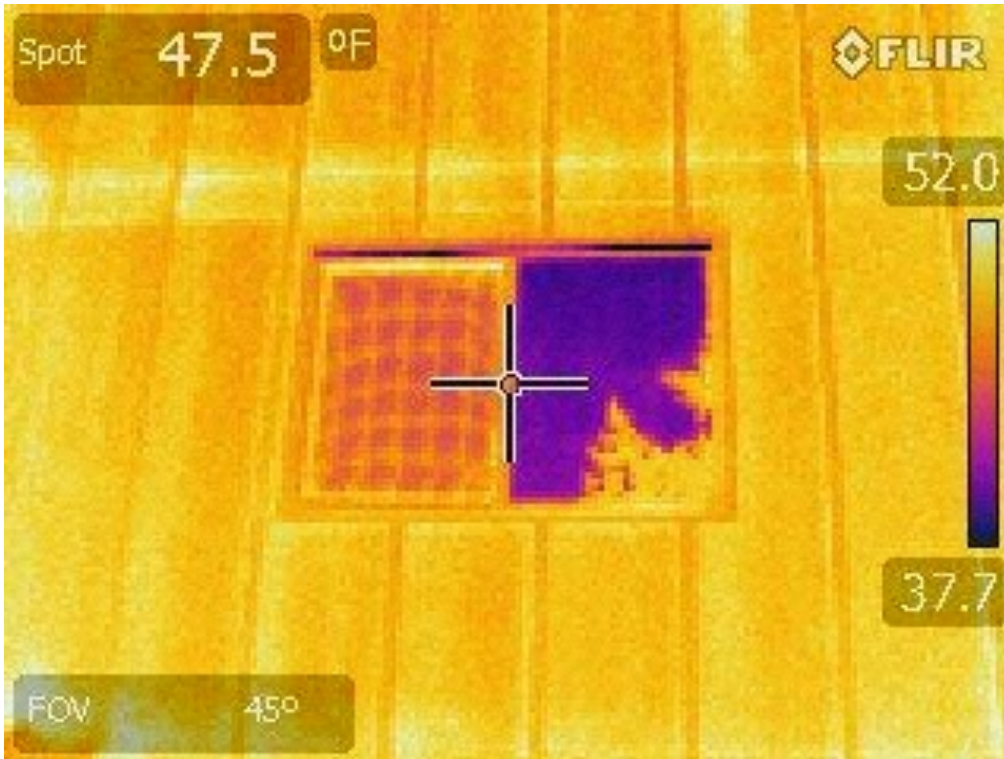
1441 Oak St. #4  
Eugene, OR 97401

T 541-357-7743  
F 541-686-3362  
luke@orhomeinspections.com  
[www.orhomeinspection.com](http://www.orhomeinspection.com)

# Springfield, Oregon Date: 11/6th & 7th/2014



**Springfield, Oregon Date: 11/6th & 7th/2014**

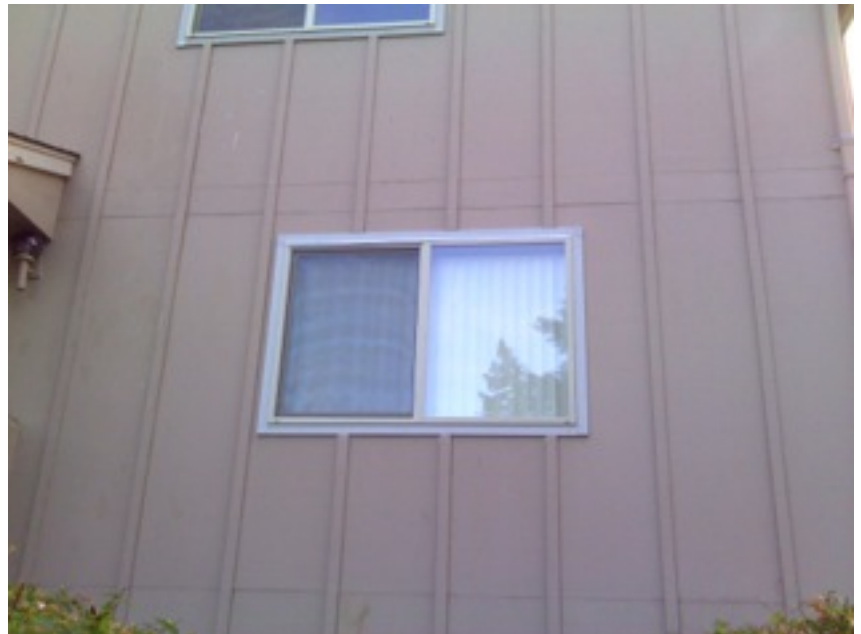


**LOCATION:** Exterior wall, north facing.  
**EQUIPMENT:** Exterior window  
**NOTE:** No thermal signature noted that suggested water intrusion around the window assembly.

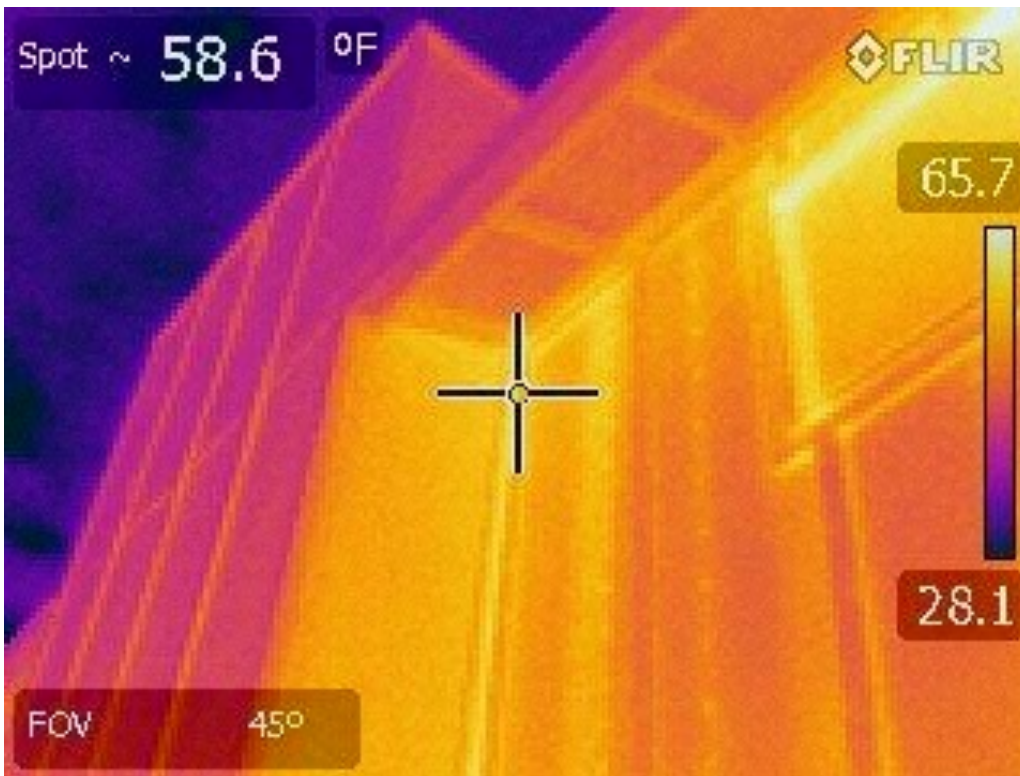
PARAMETERS	
Emissivity	0.94
Reflective temperature	N/A
Distance	N/A
Relative humidity	N/A
Atmospheric temperature	N/A
Transmission	0.9
IR window temperature	N/A
IR window transmission	N/A

MEASUREMENTS	
Elevated moisture levels:	No
Spot 2	
Spot 3	
Spot 4	

IMAGE INFORMATION	
Camera:	FLIR E40
Lens:	FOV 45 Degrees
Image Size:	320 X 240
File Size:	60 KB



**Springfield, Oregon Date: 11/6th & 7th/2014**



**LOCATION:** Exterior wall, west facing.  
**EQUIPMENT:** Chimney Chase.  
**NOTE:** No thermal signature noted that suggested water intrusion around the chimney chase.

PARAMETERS	
Emissivity	0.94
Reflective temperature	N/A
Distance	N/A
Relative humidity	N/A
Atmospheric temperature	N/A
Transmission	0.9
IR window temperature	N/A
IR window transmission	N/A

MEASUREMENTS	
Elevated moisture levels:	No

IMAGE INFORMATION	
Camera:	FLIR E40
Lens:	FOV 45 Degrees
Image Size:	320 X 240
File Size:	58 KB





**Springfield, Oregon Date: 11/6th & 7th/2014**



**LOCATION:** Exterior wall, west facing  
**EQUIPMENT:** Rear deck attachment to attachment to house  
**NOTE:** No thermal signature noted that suggested water intrusion around the attachment to the house.

PARAMETERS	
Emissivity	0.94
Reflective temperature	N/A
Distance	N/A
Relative humidity	N/A
Atmospheric temperature	N/A
Transmission	0.9
IR window temperature	N/A
IR window transmission	N/A

MEASUREMENTS	
Elevated moisture levels:	No

IMAGE INFORMATION	
Camera:	FLIR E40
Lens:	FOV 45 Degrees
Image Size:	320 X 240
File Size:	59 KB



**Springfield, Oregon Date: 11/6th & 7th/2014**



**LOCATION:** Exterior wall, west facing.  
**EQUIPMENT:** Exterior siding at chimney chase.  
**NOTE:** No thermal signature noted that suggested water intrusion around the chimney chase.

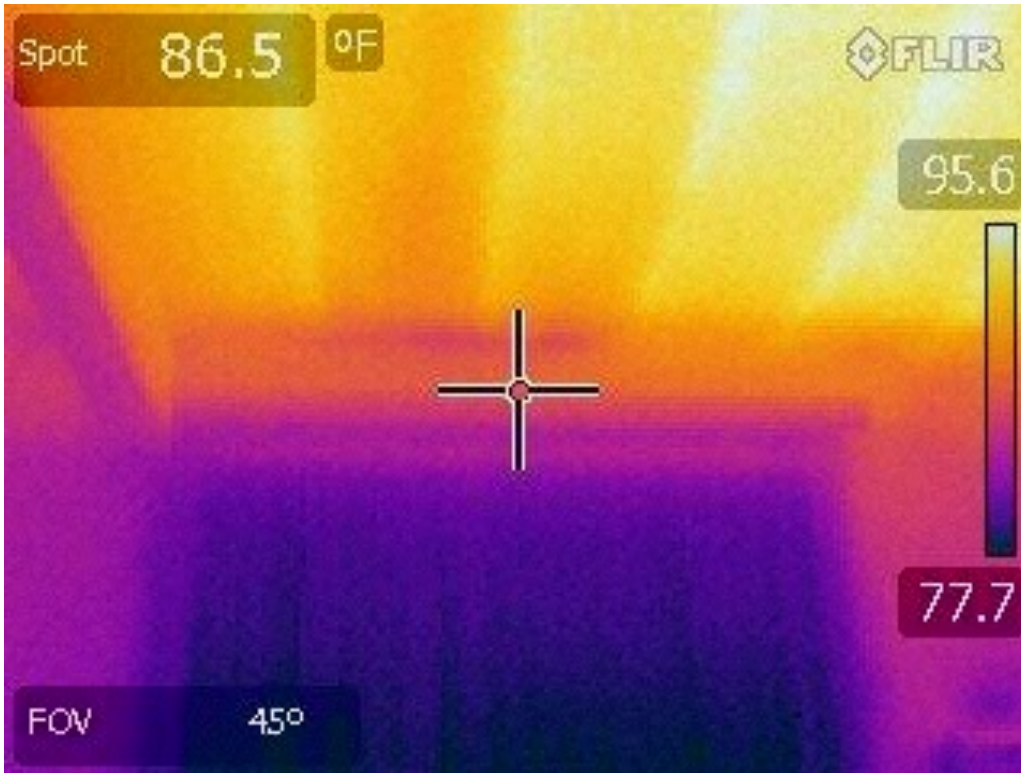
PARAMETERS	
Emissivity	0.94
Reflective temperature	N/A
Distance	N/A
Relative humidity	N/A
Atmospheric temperature	N/A
Transmission	0.9
IR window temperature	N/A
IR window transmission	N/A

MEASUREMENTS	
Elevated moisture levels:	No

IMAGE INFORMATION	
Camera:	FLIR E40
Lens:	FOV 45 Degrees
Image Size:	320 X 240
File Size:	57 KB



**Springfield, Oregon Date: 11/6th & 7th/2014**

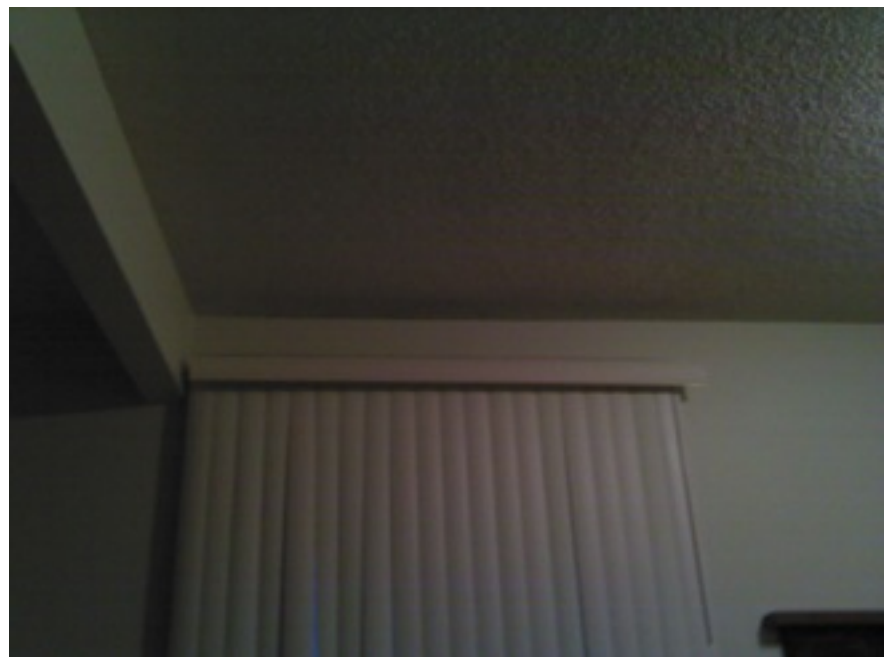


**LOCATION:** Downstairs at sliding glass door.  
**EQUIPMENT:** Ceiling where the deck attaches to exterior of the home.  
**NOTE:** No thermal signature noted that suggested water intrusion around the attachment to the house.

PARAMETERS	
Emissivity	0.94
Reflective temperature	N/A
Distance	N/A
Relative humidity	N/A
Atmospheric temperature	N/A
Transmission	0.9
IR window temperature	N/A
IR window transmission	N/A

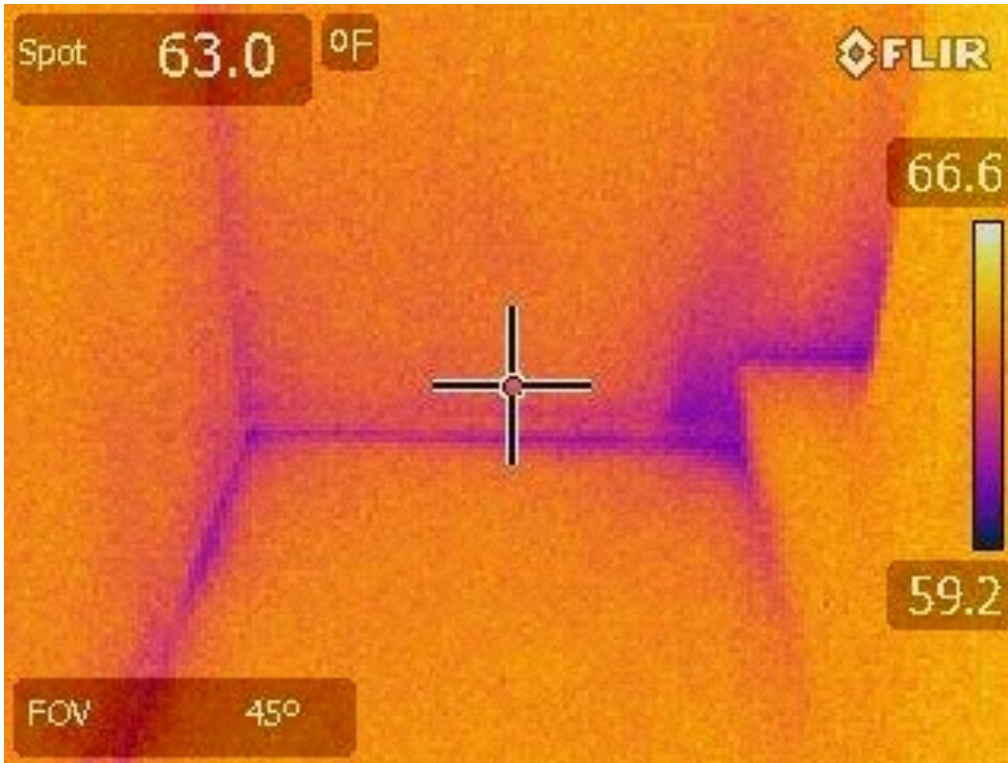
MEASUREMENTS	
Elevated moisture levels:	No

IMAGE INFORMATION	
Camera:	FLIR E40
Lens:	FOV 45 Degrees
Image Size:	320 X 240
File Size:	55 KB





**Springfield, Oregon Date: 11/6th & 7th/2014**



**LOCATION:** Downstairs at bottom of stairway.  
**EQUIPMENT:** Interior wall  
**NOTE:** No thermal signature noted that suggested water intrusion around the attachment to the house.

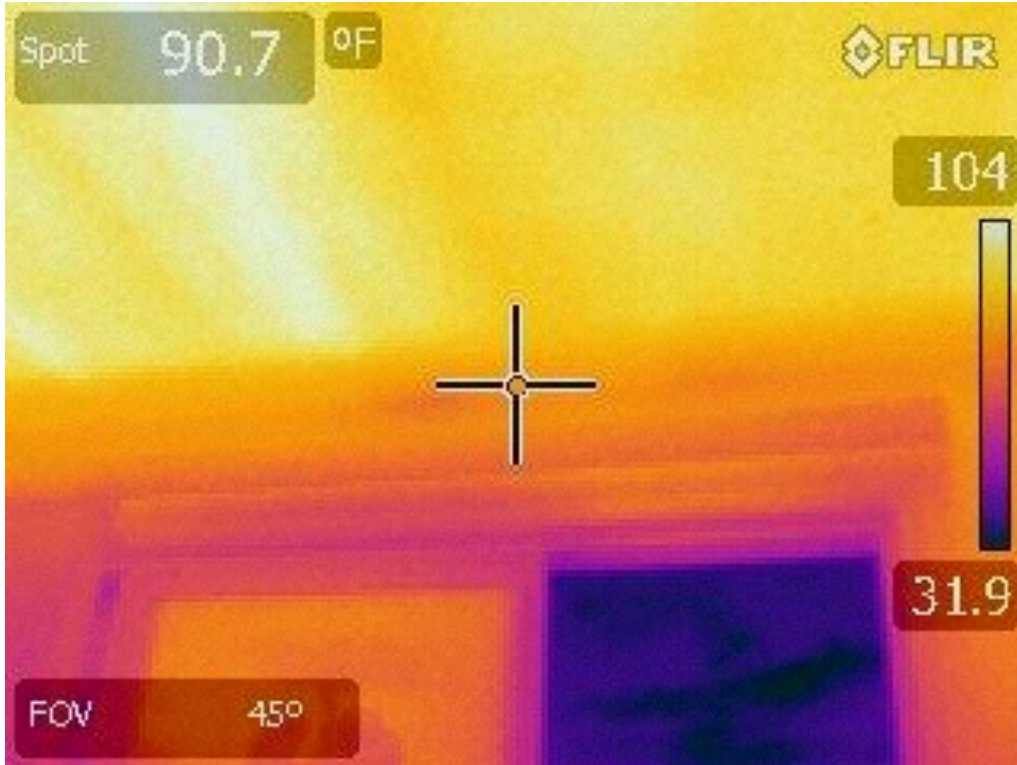
PARAMETERS	
Emissivity	0.94
Reflective temperature	N/A
Distance	N/A
Relative humidity	N/A
Atmospheric temperature	N/A
Transmission	0.9
IR window temperature	N/A
IR window transmission	N/A

MEASUREMENTS	
Elevated moisture levels:	No

IMAGE INFORMATION	
Camera:	FLIR E40
Lens:	FOV 45 Degrees
Image Size:	320 X 240
File Size:	54 KB



**Springfield, Oregon Date: 11/6th & 7th/2014**

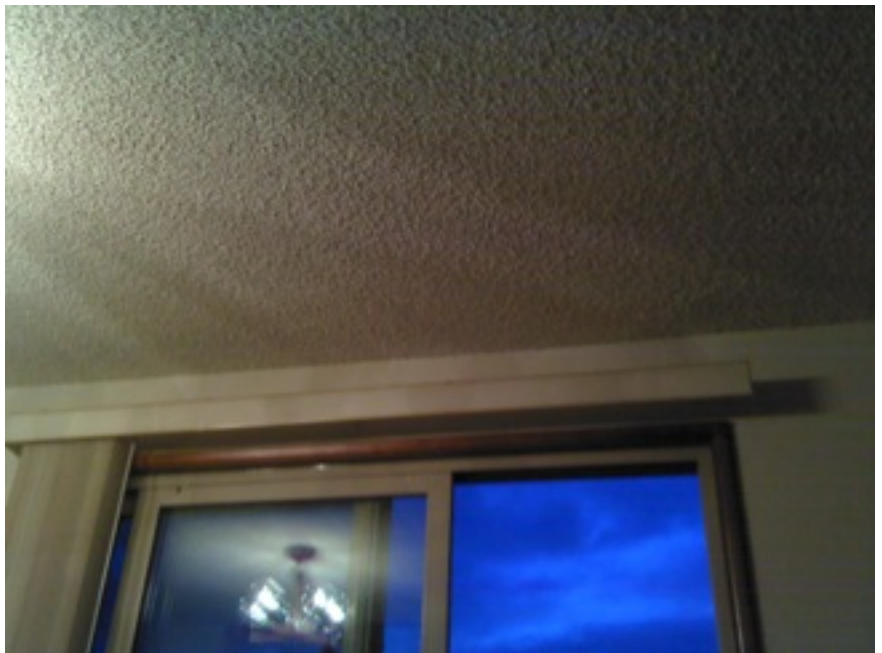


**LOCATION:** Main floor.  
**EQUIPMENT:** Ceiling over sliding glass door.  
**NOTE:** Thermal signature corresponding with stains on ceiling appear to be from exhaust vents in ceiling. Inspector thinks stains could be from deteriorating sealant on exterior of building where exhaust vents terminate. Condensation from uninsulated exhaust ducts may also be contributing to stains on ceiling.

PARAMETERS	
Emissivity	0.79
Reflective temperature	86
Distance	3.28
Relative humidity	50%
Atmospheric temperature	68
Transmission	0.9
IR window temperature	N/A
IR window transmission	N/A

MEASUREMENTS	
Spot 1	171
Spot 2	155
Spot 3	
Spot 4	

IMAGE INFORMATION	
Camera:	FLIR E40
Lens:	FOV 45 Degrees
Image Size:	320 X 240
File Size:	120 KB





**Springfield, Oregon Date: 11/6th & 7th/2014**



**LOCATION:** Main floor, north facing.

**EQUIPMENT:** Window assembly and interior wall.

**NOTE:** No thermal signature noted that suggested water intrusion around the window assembly.

PARAMETERS	
Emissivity	0.94
Reflective temperature	N/A
Distance	N/A
Relative humidity	N/A
Atmospheric temperature	N/A
Transmission	0.9
IR window temperature	N/A
IR window transmission	N/A

MEASUREMENTS	
Elevated moisture levels:	No

IMAGE INFORMATION	
Camera:	FLIR E40
Lens:	FOV 45 Degrees
Image Size:	320 X 240
File Size:	59 KB



**Springfield, Oregon Date: 11/6th & 7th/2014**



**LOCATION:** Upstairs west facing bedroom.

**EQUIPMENT:** Window assembly and interior walls and ceiling

**NOTE:** Thermal signatures on ceiling appear to be from cold air intrusion at soffit vents. Thermal signatures correspond to the location of the stains on the ceiling. No elevated moisture levels at time of inspection.

PARAMETERS	
Emissivity	0.94
Reflective temperature	N/A
Distance	N/A
Relative humidity	N/A
Atmospheric temperature	N/A
Transmission	0.9
IR window temperature	N/A
IR window transmission	N/A

MEASUREMENTS	
Elevated moisture levels:	No

IMAGE INFORMATION	
Camera:	FLIR E40
Lens:	FOV 45 Degrees
Image Size:	320 X 240
File Size:	120 KB

